



Global leading company in
Pneumatic & Hydraulic Control System



Company Introduction

Be A Reliable Company

Making the world more convenient
with the best quality



Since its foundation in 1992, **KCC Co., Ltd** has continuously developed and produced a variety of hydro pneumatic parts including fittings, speed controllers, hydro pneumatic cylinders and pneumatic solenoid valves with the aim of localization of automobile parts.

As a result of generous R&D investments in order to manufacture high-quality products, our technologies are now widely recognized. And we are supplying our products to POSCO, Hyundai Steel and Samsung Electronics and realizing our long-cherished dream of developing a truly global brand by carrying out continued overseas marketing in countries such as Japan, Europe and China.

KCC Co., Ltd promises that it will make contributions to the improvement of customers' productivity and their creation of added value and let the world know Korea's superior technologies by continuing investment in research & development in the future.

Business Area

1. Pneumatic Cylinder
2. Hydraulic Cylinder
3. Pneumatic Solenoid Valve
4. Process Valve
5. Air Clean Unit
6. Air Dryer
7. Vacuum Equipment
8. Shock absorber & Gas Spring
9. Accessory
10. The Others



Place of Business

Head Office

Location : Seoul

Branch Office

Location : Seoul, Daegu, Busan, Daejeon, Gwangju, Changwon

1st Factory

Location : Daegu

Main Product : Pneumatic Cylinder
Pneumatic & Hydraulic R&D office

2nd Factory

Location : Daegu

Main Product : Hydraulic Cylinder
Custom made for special cylinder

3rd Factory

Location : Gunpo

Main Product : Solenoid Valve, Air Unit
Clean room production

MVO series

VACUUM EQUIPMENT

Rotary Vane Vacuum Pumps
(Oil Circulated Type)

How to Order

MVO (1) (010) (2) - (B) (3) (C) (4) - () (5)



MVO 006



MVO 008/016



MVO 010/020



MVO 030/040



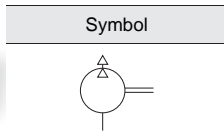
MVO 063/100



MVO 160/250



MVO 400/630



① Series

MVO : Oil circulated
(Built-in exhaust filter)

② Displacement

006	6m ³ /hr	063	63m ³ /hr
008	8m ³ /hr	100	100m ³ /hr
016	16m ³ /hr	160	160m ³ /hr
010	10m ³ /hr	250	250m ³ /hr
020	20m ³ /hr	400	400m ³ /hr
030	30m ³ /hr	630	630m ³ /hr
040	40m ³ /hr		

③ Motor voltage

	Motor version(1~)		Motor version(3~)
A	110/220V	D	220/380V
B	220V	E	380V
C	110V	F	220V
L	240V	G	440V
		H	460V
		J	415V
		K	200V

④ Motor hertz (Hz)

A : 60
B : 50
C : 50/60

⑤ Arrival pressure

Nil : Standard
B : 2mbar
C : 20mbar

Specifications

Type			MVO 006	MVO 008	MVO 016	MVO 010	MVO 020	MVO 030	MVO 040	
Displacement	50Hz	m ³ /h	6.0	8.0	16	10	20	30	40	
	60Hz		7.2	9.6	19	12	24	36	48	
Max. pressure	A	mbar	2	0.5	2	0.5	2	0.5		
	C		20							
Weight	50Hz	kg	12	18		20		34	38	
	60Hz									
Type			MVO 063	MVO 100	MVO 160	MVO 250	MVO 400	MVO 630		
Displacement	50Hz	m ³ /h	63	100	160	250	400	630		
	60Hz		76	120	190	300	480	760		
Max. pressure	A	mbar	0.5							
	C		20							
Weight	50Hz	kg	64	75	174	202	550	670		
	60Hz									

SVO series

Rotary Vane Vacuum Pumps
(Oil Circulated Type)

How to Order

SVO (1) (060) (2) - (B) (3) (C) (4)



SVO 060

① Series

SVO : Oil circulated
(no exhaust filter)

② Displacement

060 : 60 l/min
100 : 100 l/min

③ Motor voltage

	Motor version(1~)
A	110/220V
B	220V
C	110V

④ Motor hertz (Hz)

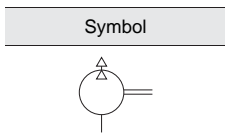
A : 60
B : 50
C : 50/60

⑤ Arrival pressure

Nil : Standard
B : 2mbar
C : 20mbar

Specifications

Type			SVO060	SVO100
Displacement	50Hz	l/min	50	85
	60Hz		60	100
Max. pressure		mbar	2	
Weight	50Hz	kg	12	13
	60Hz			



MOT series

VACUUM EQUIPMENT

Rotary Vane Vacuum Pumps
(Oil Flooded Type)

How to Order



MOT 85

MOT 140 - B C -

① ② ③ ④ ⑤

① Series

MOT : Oil flooded type

② Displacement

085 : 85 l/min
140 : 140 l/min

③ Motor voltage

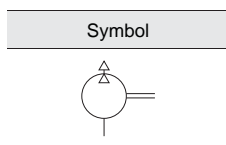
Motor version(1~)	
A	110/220V
B	220V
C	110V

④ Motor hertz (Hz)

A : 60
B : 50
C : 50/60

⑤ Arrival pressure

Nil : Standard
B : 2mbar
C : 20mbar



Specifications

Type			MOT085	MOT140
Displacement	50Hz	l/min	70	116
	60Hz		85	140
Max. pressure	Gas Ballast Close	Torr	5×10^{-3}	
			5×10^{-2}	
Weight	50Hz	kg	15	16
	60Hz			

SML series

Rotary Vane Vacuum Pumps
(Dry Running Type)

How to Order



SML 030/060



SML 140

SML 030 - B C -

① ② ③ ④ ⑤

① Series

SML : Dry running

② Displacement

030 : 30 l/min
60 : 60 l/min
140 : 140 l/min
280 : 280 l/min

③ Motor voltage

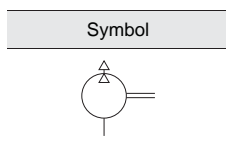
Motor version(1~)		Motor version(3~)	
A	110/220V	D	220/380V
B	220V	E	380V
C	110V	F	220V
L	240V	G	440V
		H	460V
		J	415V
		K	200V

④ Motor hertz (Hz)

A : 60
B : 50
C : 50/60

⑤ Arrival pressure

Nil : Standard
B : 2mbar
C : 20mbar



Specifications

Type			SML030	SML060	SML140	SML280
Displacement	50Hz	l/min	25	50	120	235
	60Hz	l/min	30	60	140	280
Max. pressure	50Hz	mmHg	550-600		660	
	60Hz					
Max. pressure		bar	1.0			
Weight	50Hz	kg	7.0		25.5	
	60Hz					

DWV series

VACUUM EQUIPMENT

Liquid Ring Vacuum Pumps

How to Order



DWV 400



DWV 10H

Symbol



DWV ① 400 ② - B ③ C ④ - ⑤

① Series
DWV : Water sealed

② Displacement
400 : 400 l/min
10H : 1000 l/min

③ Motor voltage

Motor version(1~)		Motor version(3~)	
A	110/220V	D	220/380V
B	220V	E	380V
C	110V	F	220V
L	240V	G	440V
		H	460V
		J	415V
		K	200V

④ Motor hertz (Hz)
A : 60
B : 50
C : 50/60

⑤ Arrival pressure
Nil : Standard
C : 20mbar

Specifications

Type			DWV400	DWV10H
Displacement	50Hz	l/min	335	835
	60Hz		400	1000
Max. pressure		mmHg	680	730
Weight	50Hz	kg	20	
	60Hz			

ENT series

Suction Pump for ENT Medical

How to Order



ENT 070

Symbol



ENT ① 035 ② - B ③ C ④ - ⑤

① Series
ENT : Suction pump

② Displacement
035 : 35 l/min
070 : 70 l/min

③ Motor voltage

Motor version(1~)	
A	110/220V
B	220V
C	110V

④ Motor hertz (Hz)
A : 60
B : 50
C : 50/60

⑤ Arrival pressure
Nil : Standard
B : 2mbar
C : 20mbar

Specifications

Type			ENT035	ENT070
Displacement	50Hz	l/min	30	60
	60Hz		35	70
Max. pressure	50Hz	mmHg	700	
	60Hz			
Weight	50Hz	kg	12.5	13.5
	60Hz			

DEN400, SYSDEN400 series

VACUUM EQUIPMENT

Suction Pump for Dental Medical

How to Order

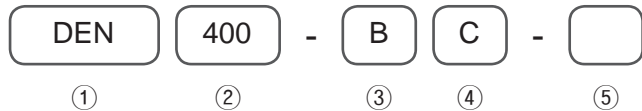


DEN 400



SYSDEN 400

Symbol



① Series

DEN : Sution pump - Single
SYSDEN : Sution pump - Dual

② Displacement

400 : 400 l/min

③ Motor voltage

Motor version(1~)	
A	110/220V
B	220V
C	110V

④ Motor hertz (Hz)

A : 60
B : 50
C : 50/60

⑤ Arrival pressure

Nil : Standard
B : 2mbar
C : 20mbar

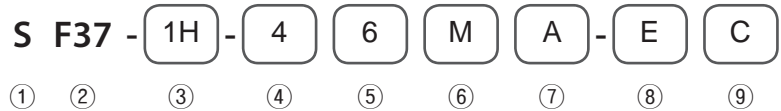
Specifications

Type			DEN400	SYSDEN400
Displacement	50Hz	l/min	335	670
	60Hz		400	800
Max. pressure		mmHg	680	

S series

Vacuum Tank Systems

How to Order



① Series

S : Vacuum tank system

② Displacement

A18	SML-030	F30	MVO-008
A19	SML-060	F27	MVO-016
A20	SML-140	F31	MVO-010
A24	SML-280	F32	MVO-020
C20	ENT-035	F34	MVO-030
C21	ENT-070	F35	MVO-040
D25	DEN-040	F36	MVO-063
E26	DWV-400	F37	MVO-100
E28	DWV-10H	F39	MVO-160
B15	SVO-060	F40	MVO-250
B16	SVO-100	F41	MVO-400
F29	MVO-006	F42	MVO-630

③ Series

1H : Simplex
2H : Duplex

④ Tank size

1 : 3 Liter
2 : 30 Liter
3 : 70 Liter
4 : 150 Liter
5 : 200 Liter
6 : 300 Liter

⑤ Tank type

1~4 : Cylinder courage
2 : Acryl type
(The inside is visible)
6~9 : Rectangularity courage

⑥ Operation

	Control pannel	Vacuum & pressure switch
M	No	No
S	No	Yes
E	Yes	No
A	Yes	Yes

⑦ Valve application

M : Manual ON/OFF(Ball valve)
A : Automatic ON/OFF (Sol. vlave)
C : Manual drain cock
D : Automatic drain cock

⑧ Motor voltage

Motor version(1~)		Motor version(3~)	
A	110/220V	D	220/380V
B	220V	E	380V
C	110V	F	220V
L	240V	G	440V
		H	460V
		J	415V
		K	200V

⑨ Motor hertz (Hz)

A : 60
B : 50
C : 50/60



Simplex



Duplex

Specifications

Model		m ³ /hr	Tank (Liter)	Weight (kg)
Simplex	SF34-1H-46AM	36	150	101
	SF35-1H-46AM	48		105
	SF36-1H-66AM	76		165
	SF37-1H-66AM	120		176
Duplex	SF34-2H-56AM	72	200	157
	SF35-2H-56AM	96		175
	SF36-2H-66AM	154	300	223
	SF37-2H-66AM	240		245